

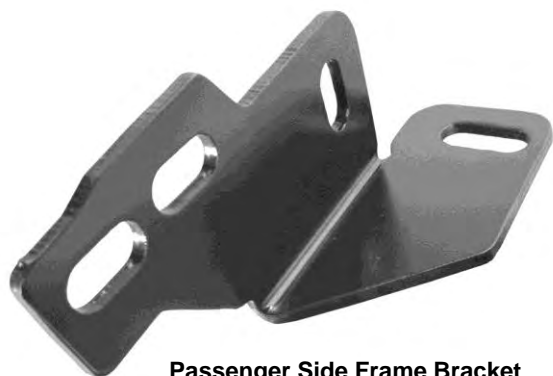


INSTALLATION INSTRUCTIONS

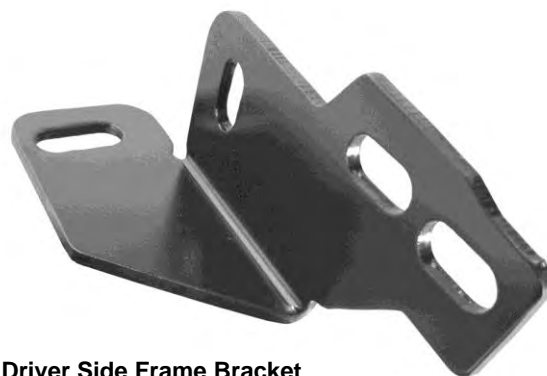
BULL BAR PART #35-4006/B35-4006/B35-4006-3/P35-4006
07-10 CHEVY SILVERADO 2500/3500 HD /GMC SIERRA 2500/3500 HD

PARTS LIST:

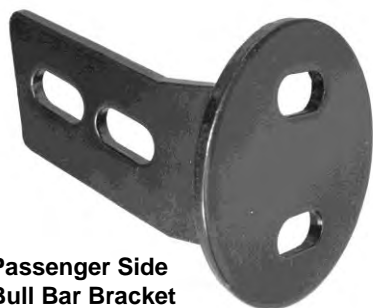
1	Bull Bar	4	10-1.50mm x 30mm Hex Head Bolts
1	Driver/Left Frame Bracket	4	10mm Lock Washers
1	Passenger/Right Frame Bracket	4	10mm Hex Nuts
1	Driver/Left Bull Bar Bracket	8	10mm ID x 27mm OD x 3mm Flat Washers
1	Passenger/Right Bull Bar Bracket	4	12-1.75mm x 35mm Hex Head Bolts
4	8-1.25mm x 25mm Hex Head Bolts	4	12mm Lock Washers
4	8mm Lock Washers	4	12mm Hex Nuts
4	8mm ID x 24mm OD x 2mm Flat Washers	8	12mm ID x 32mm OD x 3mm Flat Washers



Passenger Side Frame Bracket



Driver Side Frame Bracket



**Passenger Side
Bull Bar Bracket**



**Driver Side
Bull Bar Bracket**

PROCEDURE:

1. **REMOVE CONTENTS FROM BOX. VERIFY ALL PARTS ARE PRESENT. READ INSTRUCTIONS CAREFULLY BEFORE STARTING INSTALLATION.**
2. **NOTE:** It may be necessary to remove/relocate front license plate and license plate bracket. It is not required, but strongly recommended. If local/state law requires a license plate, license plate relocation kit is available.
3. From underside of vehicle, remove the two bolts holding the driver factory tow hook, then remove tow hook from vehicle. **NOTE:** This Bull Bar is not compatible with factory tow hooks, so you will not be reinstalling factory tow hooks back onto vehicle.
4. Determine driver and passenger Frame Brackets. **NOTE:** Refer to Figure above for bracket configuration. Position driver side Frame Bracket to the outside of the frame rail and secure using the included (2) 12mm x 35mm Hex Head Bolts, (2) 12mm lock Washers, (2) 12mm Hex Nuts, and (4) 12mm Flat Washers (**Figure 1**). Do not tighten at this time.
5. Repeat steps 3&4 for passenger side Frame Bracket.
6. Loosely attach Bull Bar Brackets to Bull Bar using the included (4) 8mm x 25mm Hex Head Bolts, (4) 8mm Lock Washers, and (4) 8mm Flat Washers (**Figure 2**). Do not tighten at this time.
7. With help position Bull Bar assembly on the inner side of Frame Brackets. Attach Bull Bar Brackets to Frame Brackets using the included (4) 10mm x 30mm Hex Head Bolts, (4) 10mm Lock Nuts, (4) 10mm Hex Nuts, and (8) 10mm Flat Washers (**Figure 3 & 4**). Do not tighten at this time.
8. Level and adjust Bull Bar, then tighten all hardware at this time. **NOTE:** If you can't reach the Bull Bar Bolts (8mm hardware) from behind of bumper and through tow hook cavity, some cutting might be necessary to the tow hook cavity in order to tighten the Bull Bar Bolts.
9. Do periodic inspections to the installation to make sure that all hardware is secure and tight.

To protect your investment, wax this product after installing. Regular waxing is recommended to add a protective layer over the finish. Do not use any type of polish or wax that may contain abrasives that could damage the finish.

For stainless steel: Aluminum polish may be used to polish small scratches and scuffs on the finish. Mild soap may be used also to clean the Bull Bar.

For gloss black finishes: Mild soap may be used to clean the Bull Bar.

(Driver Side Installation Shown)

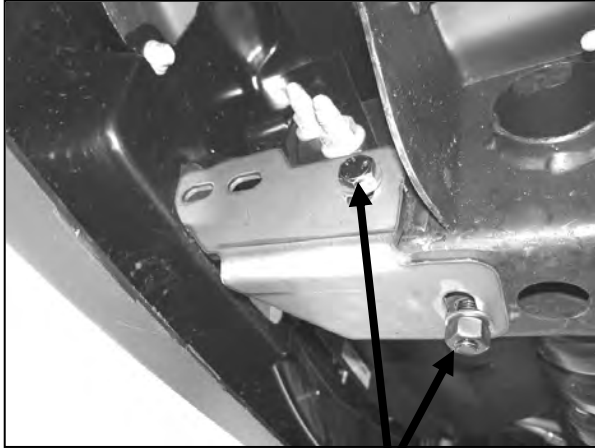


Figure 1

12mm x 35mm Hex Head Bolts
12mm Lock Washers
12mm Hex Nuts
12mm Flat Washers

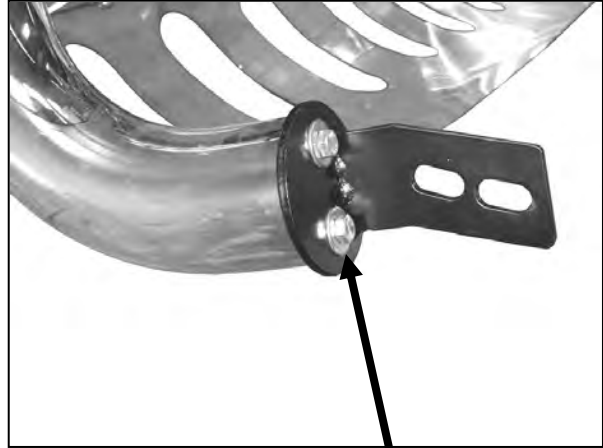


Figure 2

8mm x 25mm Hex Head Bolts
8mm Lock Washers
8mm Flat Washers

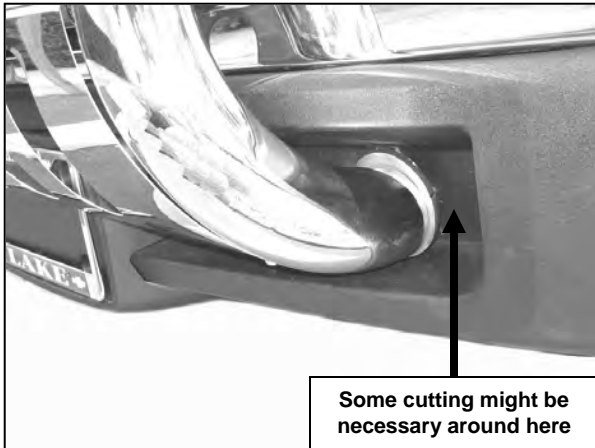


Figure 3

Some cutting might be
necessary around here

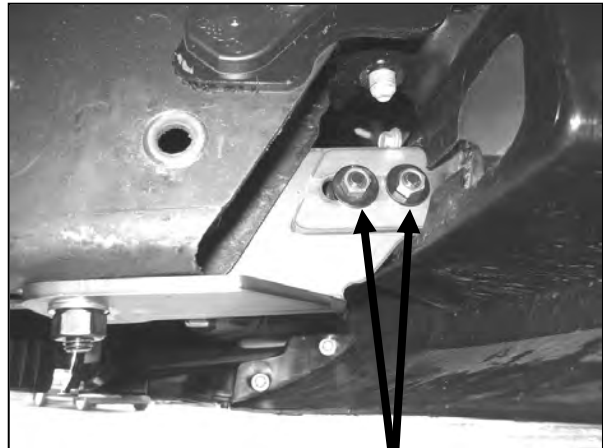


Figure 4

10mm x 30mm Hex Head Bolts
10mm Lock Washers
10mm Hex Nuts
10mm Flat Washers

Installation Complete



Figure 5