

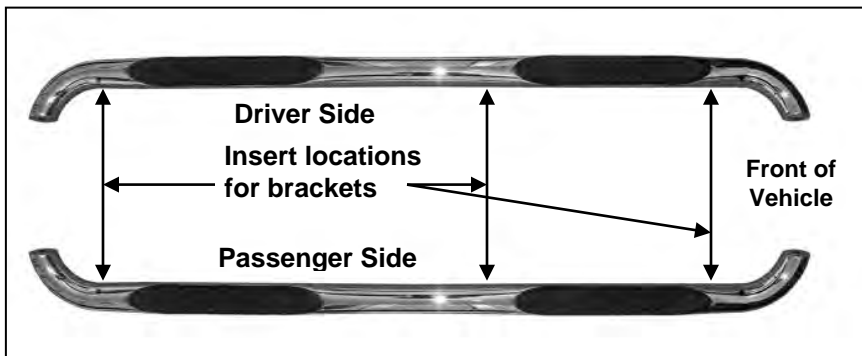
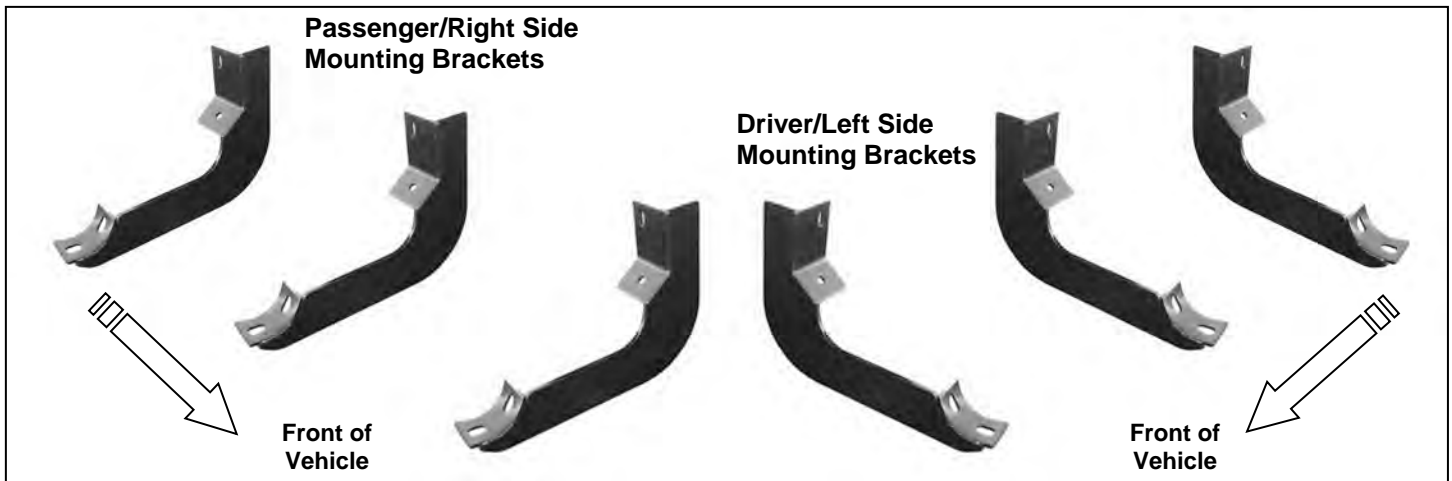


**4" ROUND BEND END SIDE BARS  
04-15 NISSAN TITAN EXT CAB/CREW CAB  
PART#239006/239006-2/TB239006/AL239006**

**4" ROUND BENT END SIDEBARS  
04-13 NISSAN TITAN CREW CAB**

**PARTS LIST:**

1	Driver/Left Sidebar	6	8-1.25mm x 25mm Hex Bolts
1	Passenger/Right Sidebar	12	8mm Lock Washers
3	Driver/Left Mounting Brackets	12	8mm x 24mm OD x 2mm STD Flat Washers
3	Passenger/Right Mounting Brackets	12	8mm x 16mm OD x 1.6mm Small Flat Washers
12	8-1.25mm x 30mm Hex Bolts	6	8mm Nylon Lock Nuts



**PROCEDURE:**

- 1. REMOVE CONTENTS FROM BOX. VERIFY ALL PARTS ARE PRESENT. READ INSTRUCTIONS CAREFULLY BEFORE STARTING INSTALLATION.**
- Start installation at the front of the driver side of the vehicle and locate the factory threaded stud and the threaded hole located on the side of the inner body panel, **(Figure 1)**. **NOTE:** You may need to remove plastic plugs on the side panel to locate the threaded holes.
- Select (1) driver side Mounting Bracket. Attach the Bracket to the threaded stud with (1) 8mm x 16mm Small Flat Washer and (1) 8mm Nylon Lock Nut. Leave hardware loose. Next, insert (1) 8mm x 25mm Hex Bolt with (1) 8mm x 16mm Small Flat Washer through the remaining hole in the Bracket and into the threaded hole, **(Figure 2)**. Snug but do not tighten hardware at this time.
- Repeat **Steps 2 – 3** to install the center and rear Mounting Brackets, **(Figures 3 – 5)**. **NOTE:** The cradles on the Mounting Brackets should be facing the rear of the vehicle when properly installed, **(Figure 3)**.

**4" ROUND BENT END SIDEBARS  
04-13 NISSAN TITAN CREW CAB**

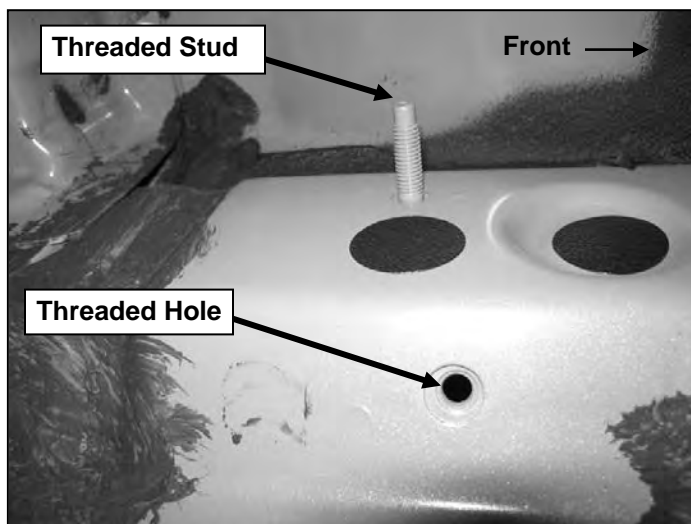
5. Once all three Mounting Brackets are partially installed, carefully place the driver Sidebar onto the Mounting Brackets. Use the included (6) 8mm x 30mm Hex Bolts, (6) 8mm Lock Washers and (6) 8mm x 24mm STD Flat Washers to bolt the Sidebar to Mounting Brackets, (**Figures 4 & 5**).
6. Level and adjust the Sidebar and tighten all hardware at this time.
7. Repeat **Steps 2 – 6** for passenger Sidebar installation.
8. Do periodic inspections of the installation to make sure that all hardware is secure and tight.

**To protect your investment**, wax this product after installing. Regular waxing is recommended to add a protective layer over the finish. Do not use any type of polish or wax that may contain abrasives that could damage the finish.

**For stainless steel:** Aluminum polish may be used to polish small scratches and scuffs on the finish. Mild soap may be used also to clean the Sidebar.

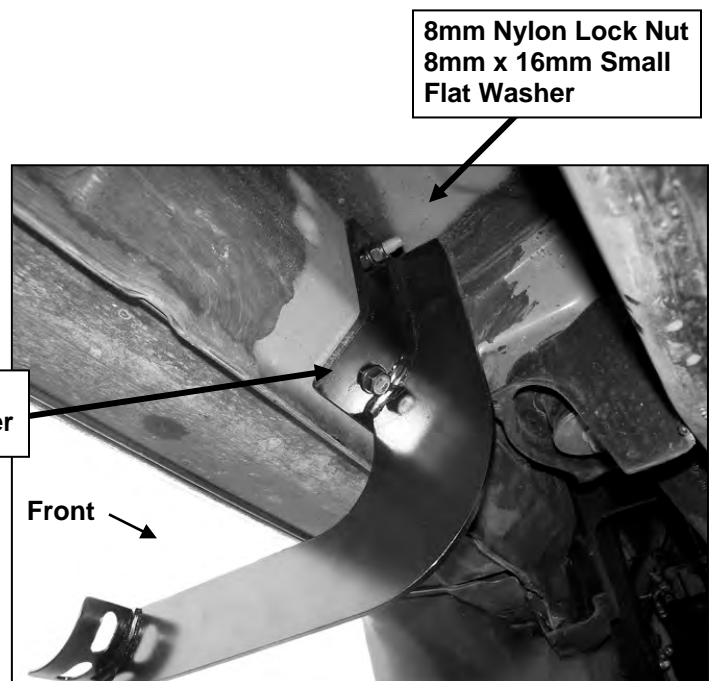
**For gloss black finishes:** Mild soap may be used to clean the Sidebar.

**Driver Side Installation Pictured**



(Fig 1) Driver side rear mounting location pictured. Note: Remove plastic plugs to locate factory threaded holes

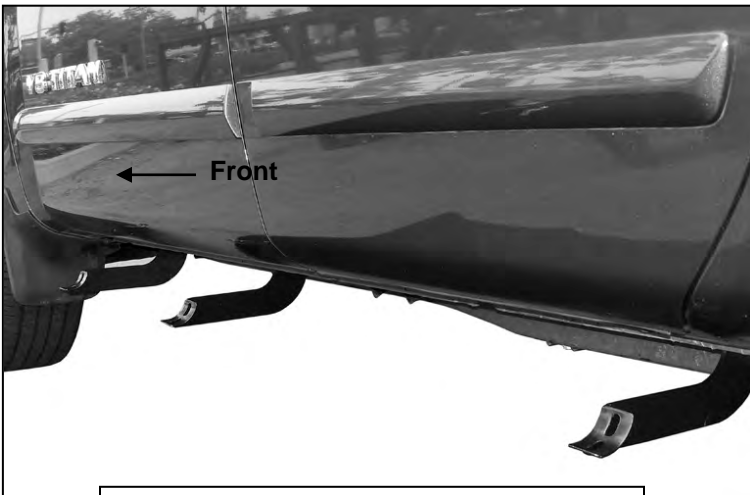
8mm x 25mm Hex Bolt  
8mm x 16mm Small Flat Washer



(Fig 2) Driver side front mounting location pictured

**4" ROUND BENT END SIDEBARS  
04-13 NISSAN TITAN CREW CAB**

**Driver Side Installation Pictured**

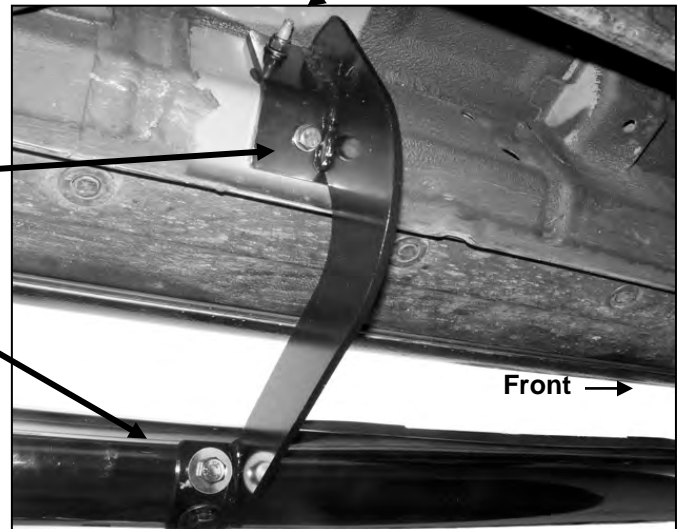


**(Fig 3) Driver side Brackets installed.  
Note all cradles face back of vehicle**

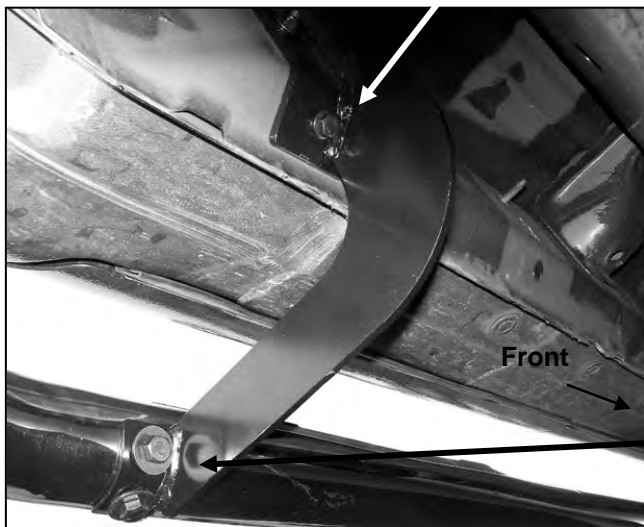
**8mm x 25mm Hex Bolt  
8mm x 16mm Small Flat Washer**

**(2) 8mm x 30mm Hex Bolts  
(2) 8mm Lock Washers  
(2) 8mm x 24mm STD Flat Washers**

**8mm x 25mm Hex Bolt  
8mm x 16mm Small Flat Washer**



**(Fig 4) Driver side center mounting location pictured**



**(Fig 5) Driver side rear mounting location pictured**

**(2) 8mm x 30mm Hex Bolts  
(2) 8mm Lock Washers  
(2) 8mm x 24mm STD Flat Washers**