



SIGNATURE OF QUALITY

AUTOMOTIVE PRODUCTS,

INSTALLATION INSTRUCTIONS

GENX OVAL STEP BAR

APPLICATION:

2015 - 2017 Ford F-150 Super Crew / Super Cab
2017 Ford F-250/350 Super Cab / Crew Cab

PART NUMBER:

20-3930, 20-3935, 20-3940, 20-3945

ITEM	QUANTITY	DESCRIPTION	TOOLS NEEDED
1,2	2	STEP BAR, DRIVER (1) AND PASSENGER (2)	13MM SOCKET
3	4 , 6*	UNIVERSAL SUPPORT BRACKET	SOCKET EXT.
4	2	MOUNTING BRACKET A	HEX KEY TOOL
5	2	MOUNTING BRACKET B	RATCHET
6	16 , 24*	M8 HEX NUT (YELLOW ZINC)	TORQUE WRENCH
7	16 , 24*	M8 FLAT WASHER (YELLOW ZINC)	
8	16 , 24*	M8 SPLIT LOCK WASHER (YELLOW ZINC)	
9	4 , 6*	M8 CARRIAGE BOLT (BLACK ZINC)	
10	8 , 12*	M10 TOOTHED LOCK WASHER (STAINLESS)	
11	8 , 12*	M10 FLAT WASHER (STAINLESS)	
12	8 , 12*	M10 BUTTON HEAD SCREW (STAINLESS)	
13	12 , 18*	M8 PLASTIC RETAINER SQUARE	
14	2*	CENTER MOUNTING BRACKET	

* SUPERCREW HAS EXTRA HARDWARE AND USES (2) CENTER MOUNTING BRACKETS.

ANTI-SEIZE LUBRICANT MUST BE USED ON ALL STAINLESS STEEL FASTENERS TO PREVENT THREAD DAMAGE AND GALLING

PROCEDURE

1. Remove contents from box, verify if all parts listed are present and free from damage.
Carefully read and understand all instructions before attempting installation.
Failure to identify damage before installation could lead to a rejection of any claim.
2. Locate the factory welded studs on the rocker panel. **See Figure 1.**
3. Thread M8 plastic retainer square (Item 13) onto factory studs for driver side. Repeat for passenger side. **See Figure 2.**
(**NOTE:** The plastic poly retainers are necessary to prevent potential corrosion between supplied steel equipment and aluminum rocker panel.)

Figure 1

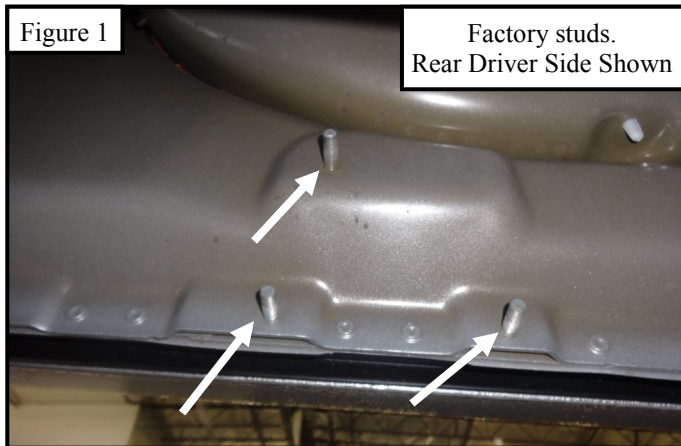
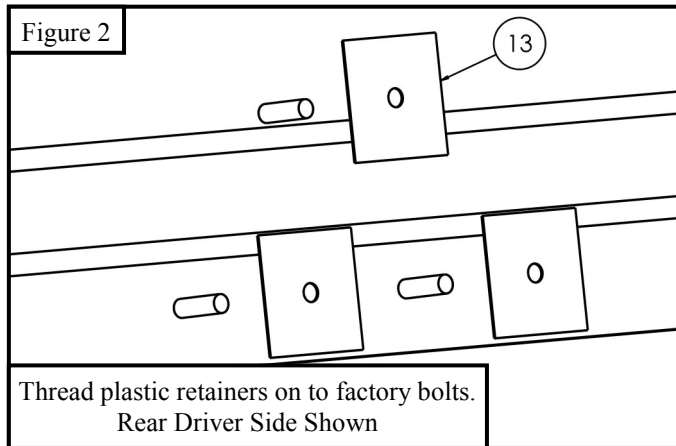


Figure 2

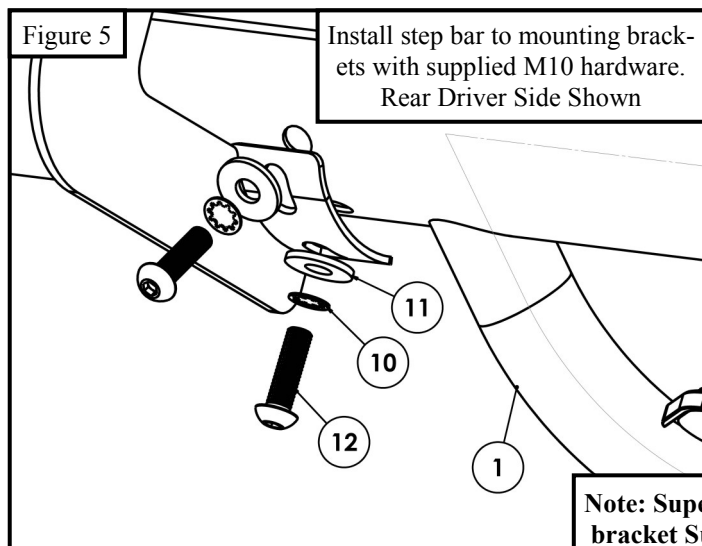
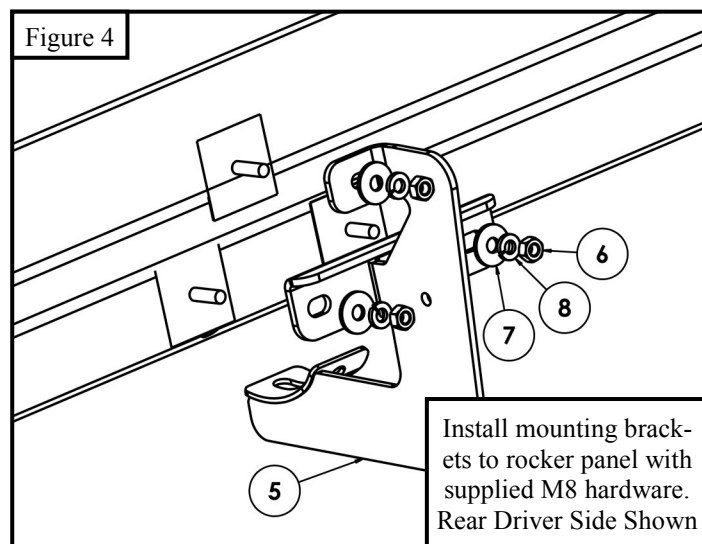
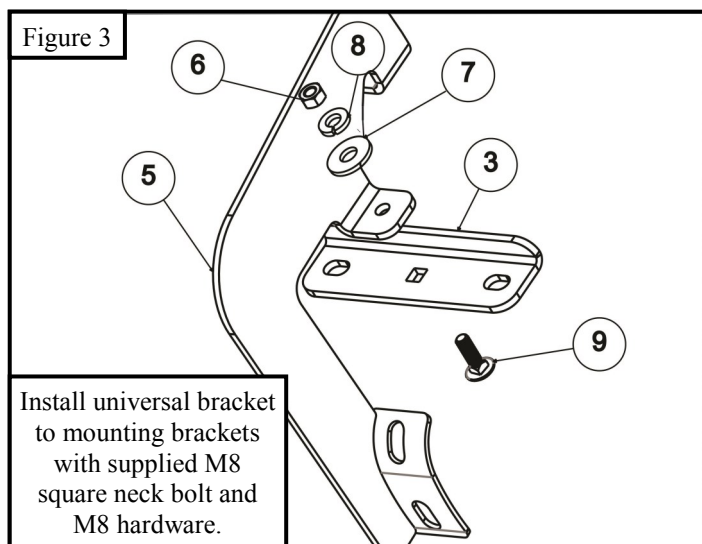


Westin Automotive Products, Inc.
320 W. Covina Blvd
San Dimas, Ca. 91773

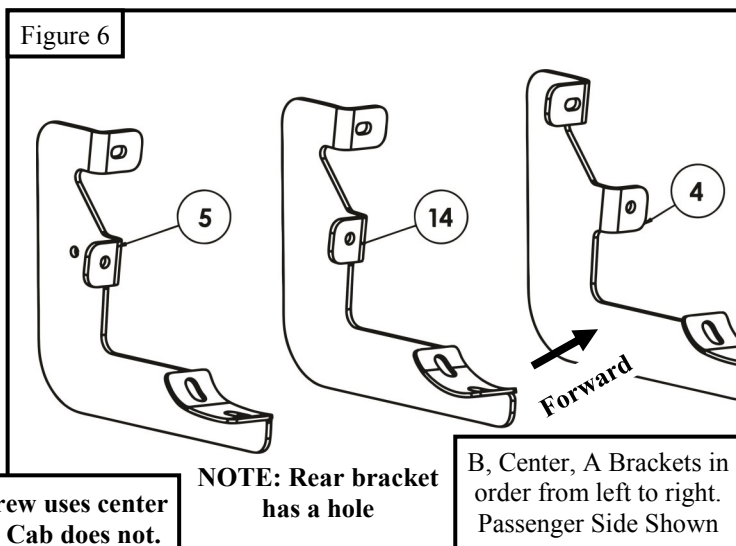
Thank you for choosing Westin products
for additional installation assistance please call
Customer Service (800) 793-7846

www.westinautomotive.com

4. Loosely install the universal support brackets to all mounting brackets with supplied M8 carriage square neck bolt and M8 hardware. See **Figure 3**. (**NOTE:** See **Figure 6 and 7** for placement of mounting brackets.)
5. Loosely install driver side mounting brackets to rocker panel with supplied M8 hardware. Repeat for passenger side. See **Figure 4**.
6. Loosely install the GenX Step Bar assembly to the previously installed mounting brackets with supplied M10 hardware. (**NOTE:** Driver side step tube will be packaged in a clear poly tube and passenger side will be packaged in a red poly tube, the Westin logo should face outward when installed.)
7. Align and adjust as necessary then torque: M8 hardware to 15 - 18 ft-lbs and M10 hardware to 30 - 35 ft-lbs.



Note: Super Crew uses center bracket Super Cab does not.



Westin Automotive Products, Inc.
320 W. Covina Blvd
San Dimas, Ca. 91773

Figure 7

Forward
Driver Side
Super Crew



CARE INSTRUCTIONS

- REGULAR WAXING IS RECOMMENDED. DO NOT USE ANY TYPE OF POLISH OR WAX THAT MAY CONTAIN ABRASIVES.
- STAINLESS STEEL PRODUCTS CAN BE CLEANED WITH MILD SOAP AND WATER. STAINLESS STEEL POLISH SHOULD BE USED TO POLISH SMALL SCRATCHES.
- GLOSS BLACK FINISHES SHOULD BE CLEANED WITH MILD SOAP AND WATER.



Westin Automotive Products, Inc.
320 W. Covina Blvd
San Dimas, Ca. 91773

Thank you for choosing Westin products
for additional installation assistance please call
Customer Service (800) 793-7846
www.westinautomotive.com



SIGNATURE OF QUALITY

AUTOMOTIVE PRODUCTS, INC.



WARNING



Failure to follow these instructions could lead to death, personal injury, and / or property damage.

FASTENERS:

All Westin supplied fasteners must be utilized and installed in accordance with the installation instructions and apply torque to the specifications as defined. **DOUBLE CHECK ALL FASTENERS BEFORE INITIAL USE, AND PERIODICALLY IN THE FUTURE TO ENSURE PROPER FUNCTION AND SAFETY.**

DRILLING:

Most Westin products do not require drilling for installation. If drilling is defined as required, use caution when drilling a vehicle. **FAILURE TO REVIEW AN AREA TO BE DRILLED MAY RESULT IN PERSONAL INJURY AND/OR INJURY TO OTHERS AS WELL AS VEHICLE DAMAGE.**

EYE PROTECTION:

ALWAYS WEAR SAFETY GLASSES OR GOGGLES DURING THE INSTALLATION PROCESS TO AVOID PERSONAL INJURY.

MAXIMUM TOWING/CARRYING CAPACITY:

The Westin Receiver Hitches will have a visible tow rating label affixed directly on the product. User should never exceed the vehicle manufacturers maximum tow and weight rating regardless of the capacity of the hitch. **FAILURE TO FOLLOW THESE GUIDELINES WILL VOID THE WESTIN WARRANTY AND MAY RESULT IN PERSONAL INJURY AND/OR INJURY TO OTHERS AS WELL AS VEHICLE DAMAGE.**



Westin Automotive Products, Inc.
320 W. Covina Blvd
San Dimas, Ca. 91773