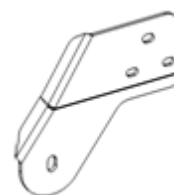


INSTALLATION INSTRUCTIONS
6000 SERIES SIDE STEPS PART NUMBER 61150 (B-PS)
2010-2014 DODGE RAM 2500HD, 3500HD CREW CAB P/U 4DR 2/4WD 6.4" BED
Do not attempt to install this product on any vehicle other than the one it is designed for and listed above!

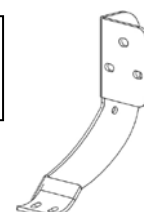
Parts List

Item	Qty.	Part #	Description	Torque
1	1 Pr	372244BB	Front Bracket	-
2	2 Pr	376254AA	Center & Rear Bracket	-
3	1 Pr	370452AA	Front Auxiliary Bracket	-
4	1 Pr	370452BA	Rear Auxiliary Bracket	-
5	6	372240BA	3/8" T-Plate	-
6	22	-	3/8" x 1 1/4" Hex Bolt	30 Ft. Lbs.
7	28	-	3/8" Flat Washer	-
8	28	-	3/8" Lock Washer	-
9	8	-	3/8" Hex Nut	30 Ft. Lbs.
10	2	-	1/2" x 2" Hex Bolt	65 Ft. Lbs.
11	2	-	1/2" Flat Washer	-
12	2	-	1/2" Lock Washer	-
13	6	-	Vinyl Gasket	-
14	1 Pr	373258AA-BA	Front Side Step Section	-

1
Driver Side
Front



2
Driver Side
Center & Rear



3
Driver Side
Front



4
Driver Side
Rear



5



Tool Required:

9/16", 3/4" & 18MM Socket
 9/16" & 3/4" Wrench
 Ratchet & Ratchet Extension

Approximate Installation Time: 60 min

Read the installation instructions completely and verify that all of the parts listed are accounted for. If you have defective, missing or damaged parts or need assistance, please contact Go Rhino Products for fast, friendly customer service at: 1-888-427-4466 or email: warranty@gorhino.com

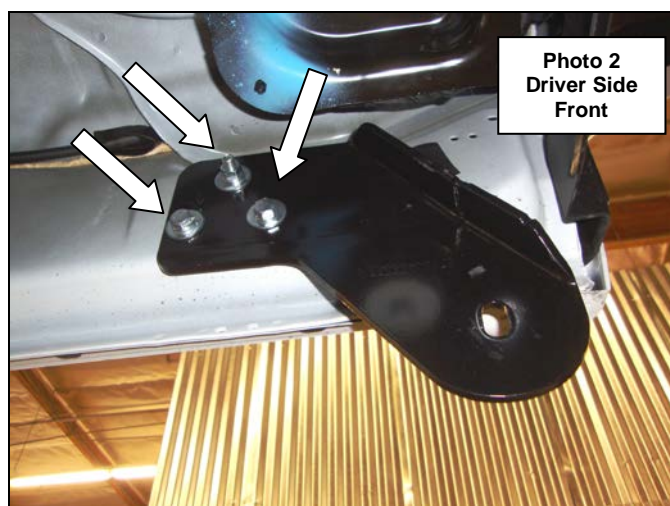
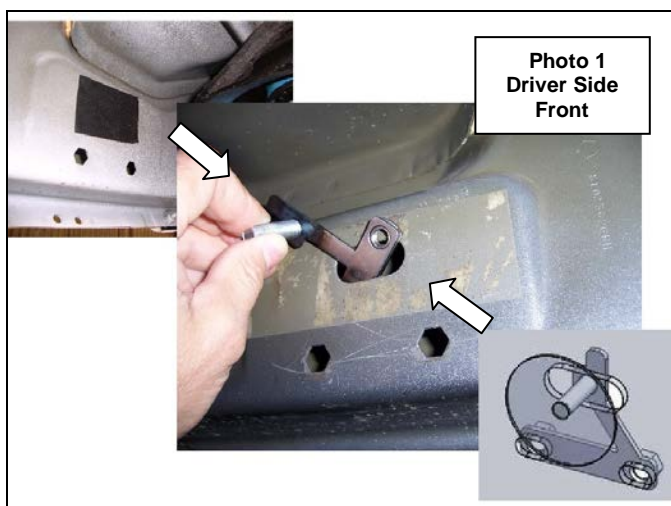
WARNING! There is thread-locking compound on all factory body mount bolts. Removal using an air assisted impact or ratchet will damage the body mount bolt threads and the internal nut assembly. We only recommend using hand tools to slowly remove and reinstall body mount bolts.

Installation

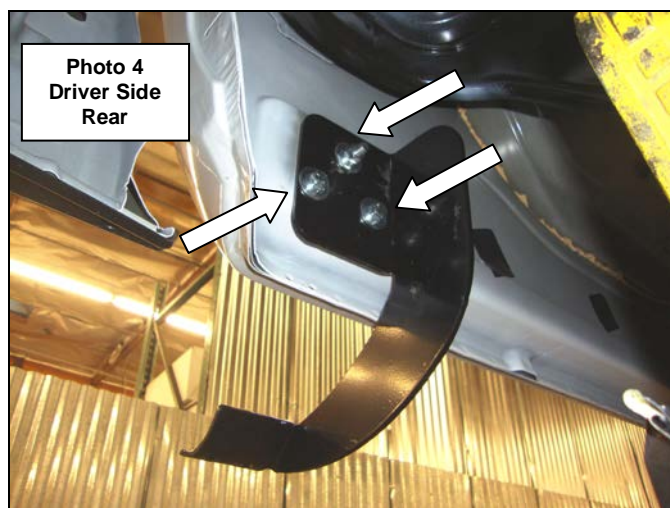
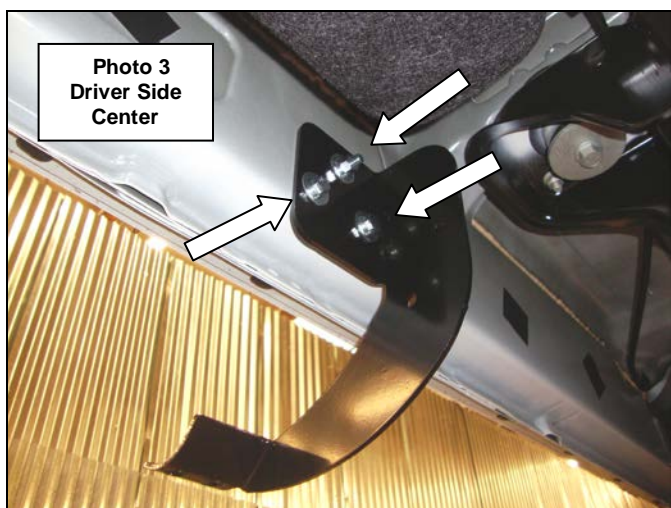
Step-1 Begin the installation on the driver side of the vehicle.

Step-2 Locate the obround hole covered with tape and (2) hexagon holes in the body panel at the front of the cab. Remove the tape covering the obround hole and install (1) 3/8" T-Plate in the body panel and install (1) vinyl gasket over the threads to prevent the T-Plate from falling into the body, (**Photo 1**).

Step-3 Attach the driver side front bracket to the body panel using the 3/8" T- Plate, (2) 3/8" x 1 1/4" hex bolts, (3) 3/8" flat washers, (3) 3/8" lock washers and (1) 3/8" hex nut, (**Photo 2**). Leave the nut and bolts loose for final adjustment.

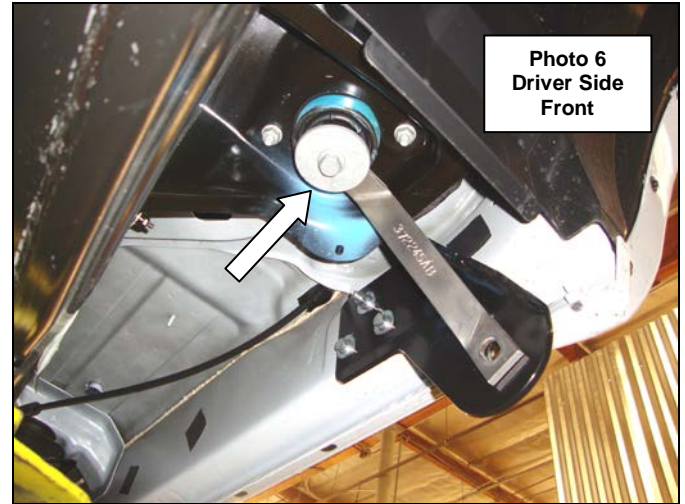
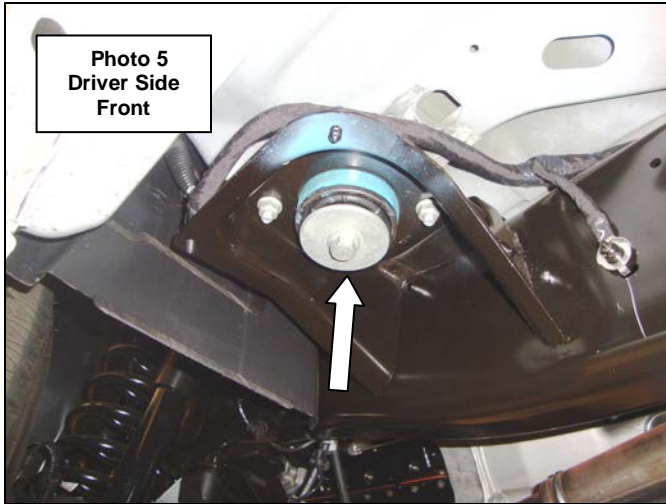


Step-4 Repeat the above steps to install the driver side center and rear bracket, (**Photo 3 & 4**).



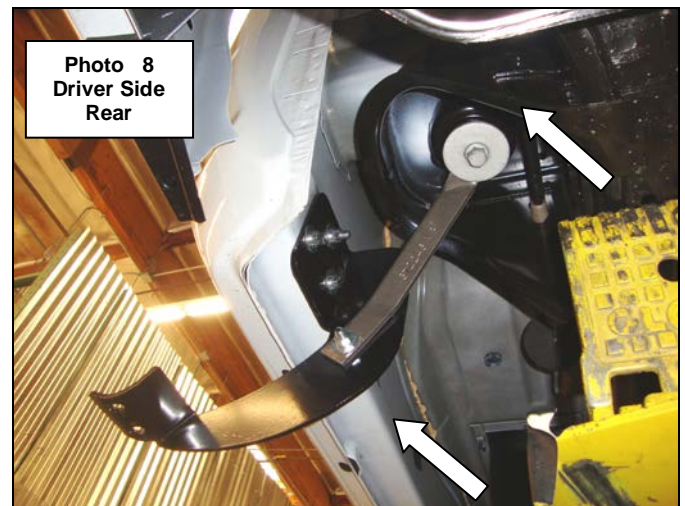
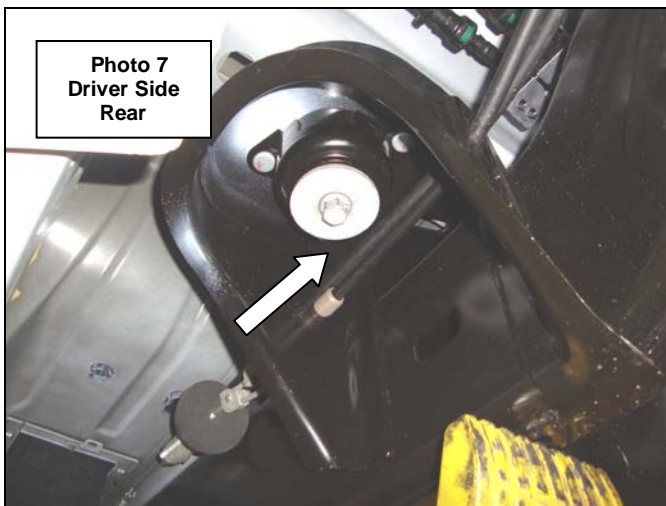
Step-5 Locate and remove the driver side front factory body mount bolt and washer, (**Photo 5**).

Step-6 Insert the factory body bolt through the slot hole in the top of the driver side front auxiliary bracket, and reinstall the body mount bolt, (**Photo 6**). Leave the bolt loose for final adjustment.

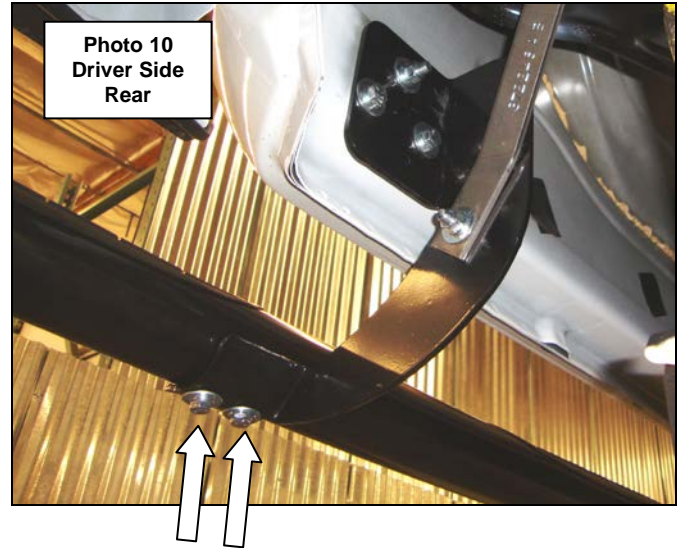
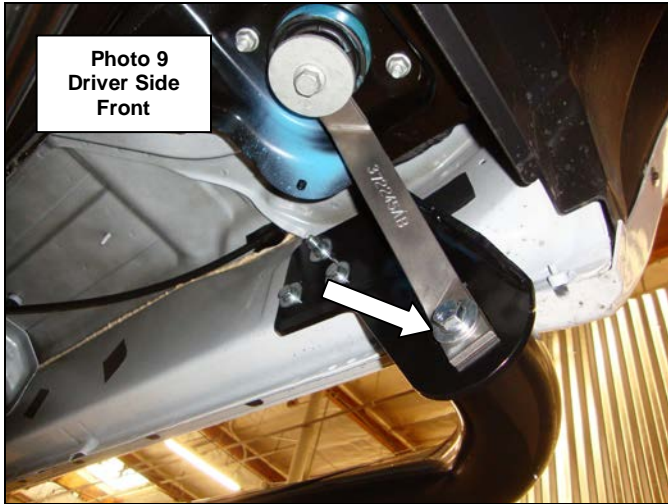


Step-7 Locate and remove the driver side rear factory body mount bolt and washer, (**Photo 7**).

Step-8 Insert the factory body bolt and washer through the slot hole in the top of the driver side rear auxiliary bracket, reinstall the body mount bolt and attach the opposite end of the auxiliary bracket to the rear bracket using (1) 3/8" x 1 1/4" hex bolt, (1) 3/8" flat washer, (1) 3/8" lock washer and (1) 3/8" hex nut, (**Photo 8**). Leave the nut and bolts loose for final adjustment.



Step-9 Attach the driver side step to the front bracket using (1) 1/2" x 2" hex bolt, (1) 1/2" lock washer and (1) 1/2" flat washer, and to each center and rear bracket using (2) 3/8" x 1 1/4" hex bolts, (2) 3/8" lock washers and (2) 3/8" flat washers, (**Photo 9 & 10**).



Step-10 Align the side step with the vehicle and tighten all factory, side step and bracket nuts and bolts. Repeat the installation steps to install the passenger side brackets and side step.

Remember to check and retighten all nuts and bolts periodically.

