

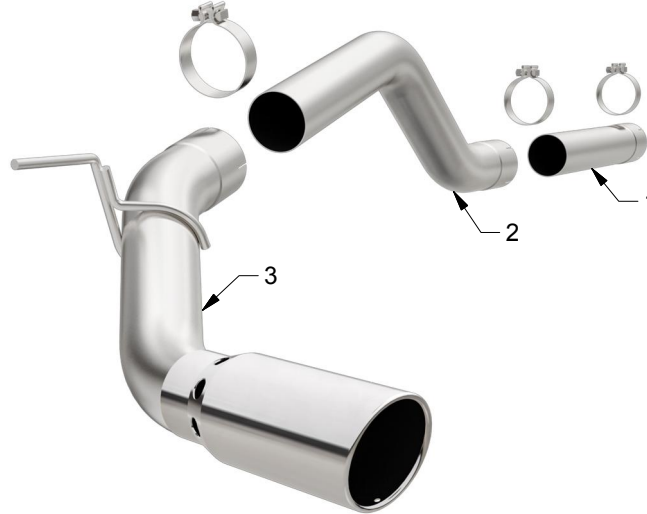


# INSTALLATION INSTRUCTIONS



2016 NISSAN TITAN 5.0L | PART NO. 17865

## BILL OF MATERIALS:



1. INLET PIPE
2. OVER AXLE PIPE
3. TAIL PIPE ASSY



WEAR SAFETY GLASSES



READ INSTRUCTIONS THOROUGHLY BEFORE INSTALLING PRODUCT

## SHOP SUPPLIES:



SPRAY LUBRICANT

To ease removal of existing exhaust components (especially on older vehicles) spray penetrating lubricant on all fasteners and hangers/insulators that will be loosened or removed and let soak before disassembly.

## HARDWARE KIT:

1. [3] 4.00" Clamp

## MINIMUM REQUIRED TOOLS:



15mm



Hanger Tool (Or Pry Bar)

## MAGNAFLOW RECOMMENDS PROFESSIONAL INSTALLATION ON ALL THEIR PRODUCTS



**WARNING:** When working on, under, or around any vehicle exercise caution. Please allow the vehicle's exhaust system to cool before removal, as exhaust system temperatures may cause severe burns. If working without a lift always consult vehicle manual for correct lifting specifications. Always wear safety glasses and ensure a safe work area. Serious injury or death could occur if safety measures are not followed.

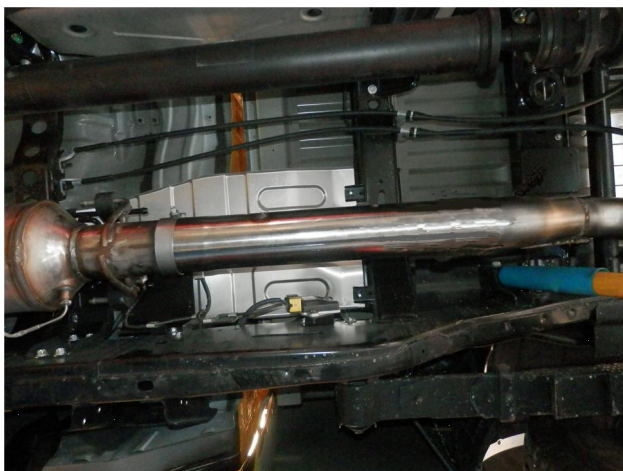
**ATTENTION:** Always install any supplied band or U-bolt clamps to the proper torque specifications of 40-45 ft-lbs for band clamps and 30-35 ft-lbs for U-bolt clamps. Over tightening will result in the clamp breaking and will NOT be warranted by MagnaFlow.

MAGNAFLOW: 22961 Arroyo Vista - Rancho Santa Margarita, CA 92688 | 1(800) 990-0905  
Technical Support: 1(800) 959-9226 | Email: [moreinfo@magnaflow.com](mailto:moreinfo@magnaflow.com)

17865 6/18/15 REV 000



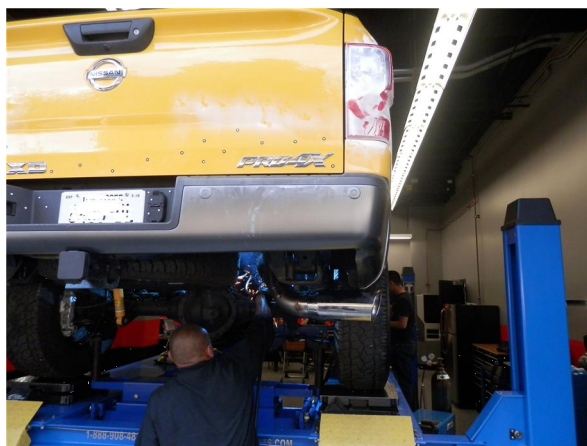
**Step 1.** To remove the OEM system, begin by unclamping the Extension Pipe from the junction behind the DPF. You can then disengage the welded hangers from the rubber insulators and remove the system. Do not damage or discard the rubber insulator it will be reused to mount the new system.



**Step 2.** Begin installation of the Magnaflow system by locating the indexing notch to the OEM peg then loosely clamping the Inlet Pipe to the outlet of the DPF using a supplied 4.00" clamp. Install the Over Axle Pipe in a similar fashion



**Step 3.** Finish by installing the Taipipe Assembly to the inlet pipe using a supplied 4.00" clamp and fitting the welded hanger into the rubber insulator.



**Step 4.** Once a final position has been chosen for the new exhaust system, evenly tighten all clamps from front to rear using the torque specifications on page one of the instructions. Inspect all fasteners after 25-50 miles of operation and re-tighten if necessary.