

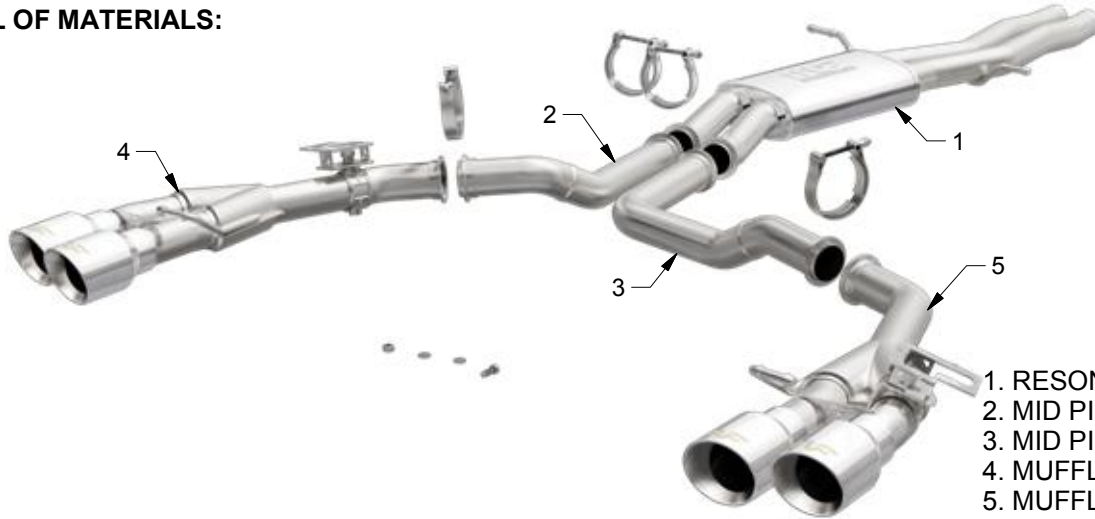


INSTALLATION INSTRUCTIONS



2015-2016 AUDI S7 4.0L SPORT | PART NO. 15383

BILL OF MATERIALS:



1. RESONATOR ASSEMBLY
2. MID PIPE D/S
3. MID PIPE P/S
4. MUFFLER ASSEMBLY D/S
5. MUFFLER ASSEMBLY P/S



WEAR SAFETY
GLASSES



READ INSTRUCTIONS
THOROUGHLY BEFORE
INSTALLING PRODUCT

SHOP SUPPLIES:



SPRAY LUBRICANT

To ease removal of existing exhaust components (especially on older vehicles) spray penetrating lubricant on all fasteners and hangers/insulators that will be loosened or removed and let soak before disassembly.

HARDWARE KIT:

1. [4] 2.50" V-Band Clamp
2. [1] 3/8-16 X 1.00 Bolt
3. [1] 3/8-16 Nut
4. [2] 3/8 Washer

MINIMUM REQUIRED TOOLS:



15mm, 19mm



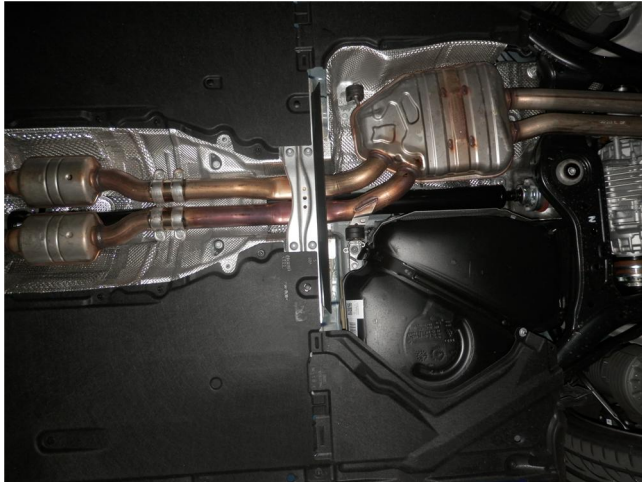
Hanger Tool
(Or Pry Bar)

MAGNAFLOW RECOMMENDS PROFESSIONAL INSTALLATION ON ALL THEIR PRODUCTS

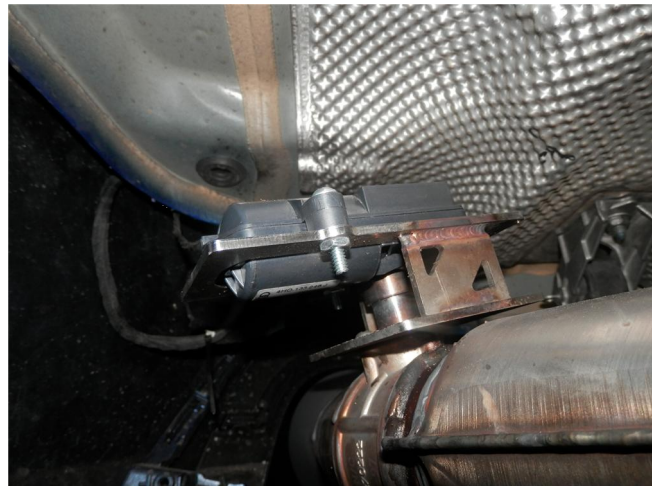
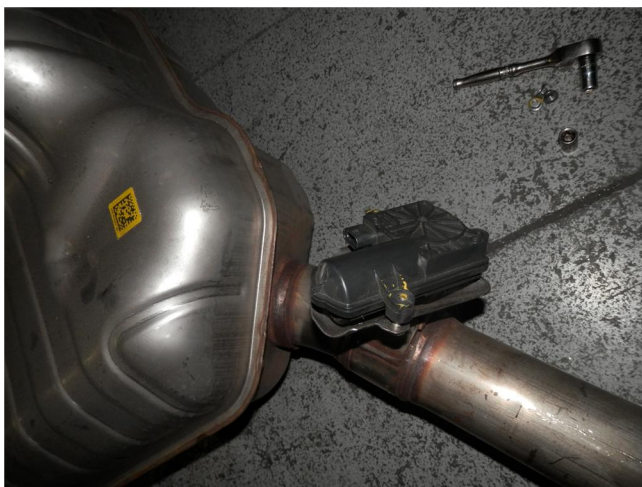


WARNING: When working on, under, or around any vehicle exercise caution. Please allow the vehicle's exhaust system to cool before removal, as exhaust system temperatures may cause severe burns. If working without a lift always consult vehicle manual for correct lifting specifications. Always wear safety glasses and ensure a safe work area. Serious injury or death could occur if safety measures are not followed.

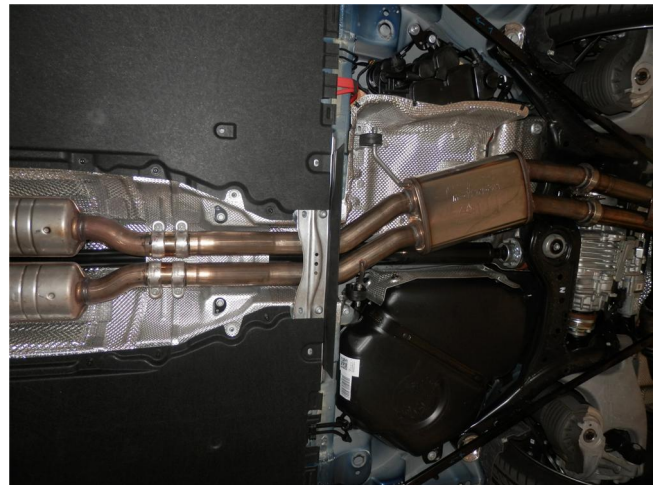
ATTENTION: Always install any supplied band or V-band clamps to the proper torque specifications of 40-45 ft-lbs for band clamps and 70 in-lbs for V-band clamps. Over tightening will result in the clamp breaking and will NOT be warranted by MagnaFlow.



Step 1. To remove the OEM exhaust system you will need to remove the cross braces/stiffener and unplug the electronic exhaust control valves at the rear of the vehicle. Start by loosening the clamps at the catalytic converter junctions, working rearward disengage the hangers from the rubber insulators (retain rubber insulators and OEM clamps) and remove the system.



Step 2. Once the OEM system is on the ground you will need to swap the servo motors from the factory control valves to the control valves on the Magnaflow Tip Assemblies. Use the new supplied hardware to attach the servo motors to the valves.

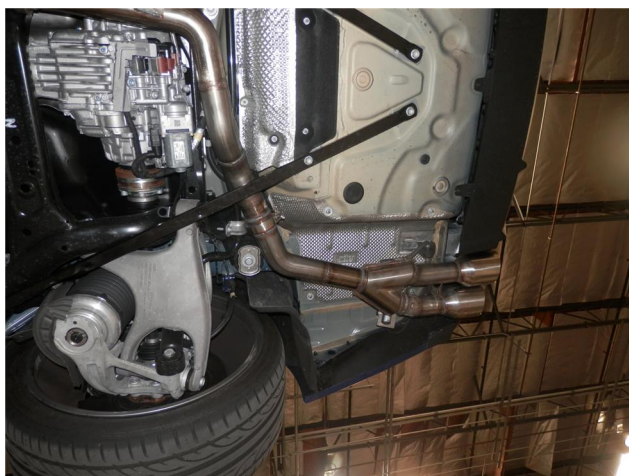


Step 3. Begin installation of the new system by fastening the Resonator Assembly inlets to the catalytic converters using the OEM clamps and fitting the hangers into the rubber insulators (Leave all clamps and fasteners loose for final adjustment of the complete system.)

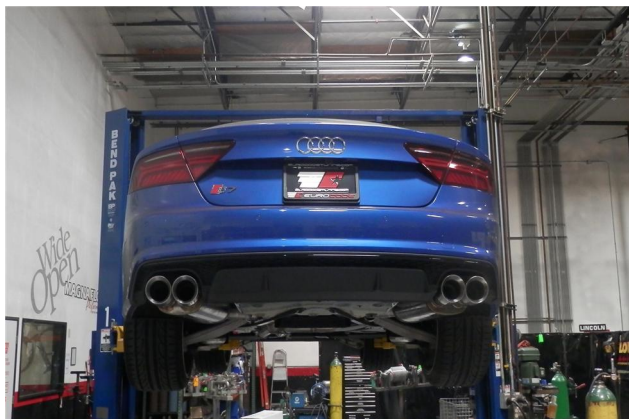
INSTALLATION INSTRUCTIONS



Step 4. Next attach the Mid Pipes to the outlets of the Resonator Assembly using the supplied V-Band clamps. ****NOTE: Take care when using the V-Band Clamps, they are designed for one time use only. Once the clamp is tightened it can not be reused.**



Step 5. Finish by installing the Tailpipe Assemblies to the outlets of the Mid Pipes using the supplied V-Band clamps. Insert hangers into rubber insulators and reattach valve motor connector plugs. Install braces.



Step 6. Once a final position has been chosen for the new exhaust system, evenly tighten all clamps from front to rear using the torque specifications on page one of the instructions. Inspect all fasteners after 25-50 miles of operation and re-tighten if necessary.