

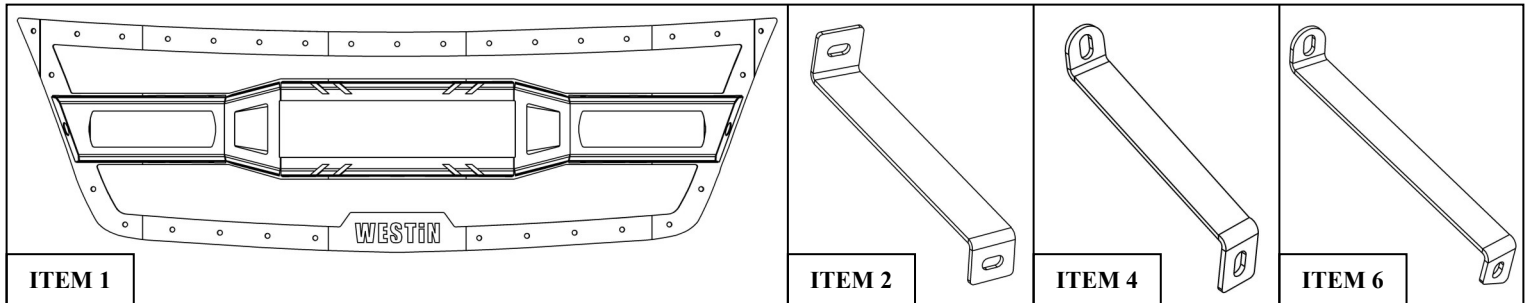
# INSTALLATION INSTRUCTIONS



**HDX LED GRILLE**  
**APPLICATION:**  
 2015-2017 Chevrolet Colorado  
**PART NUMBER:**  
 34-1025

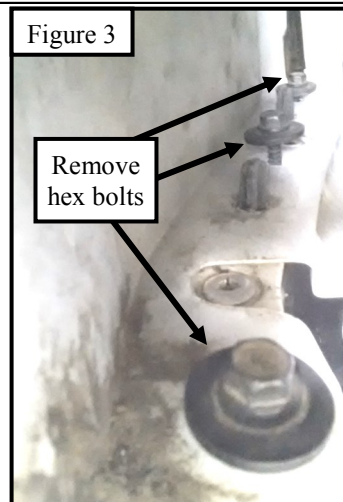
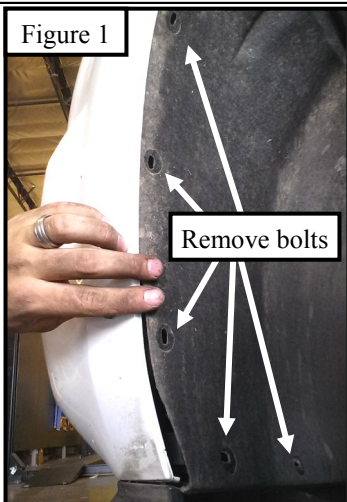
ITEM	QUANTITY	DESCRIPTION	TOOLS NEEDED
1	1	HDX GRILLE	10MM SOCKET
2,3	2	UPPER BRACKET A, DRIVER (2) AND PASSENGER (3)	13MM SOCKET
4,5	2	UPPER BRACKET B, DRIVER (4) AND PASSENGER (5)	SOCKET EXT.
6,7	2	BOTTOM BRACKET, DRIVER (6) AND PASSENGER (7)	FLAT HEAD SCREWDRIVER
8	8	M6 HEX HEAD CAP SCREW (YELLOW ZINC)	
9	8	M6 HEX NUT (YELLOW ZINC)	RATCHET
10	12	M6 SPLIT LOCK WASHER (YELLOW ZINC)	TORQUE WRENCH
11	16	M6 FLAT WASHER (YELLOW ZINC)	

**ANTI-SEIZE LUBRICANT MUST BE USED ON ALL STAINLESS STEEL FASTENERS TO PREVENT THREAD DAMAGE AND GALLING**



## PROCEDURE

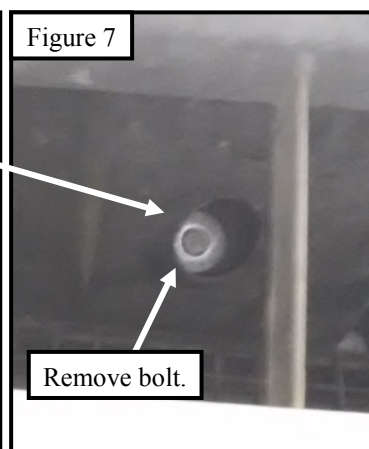
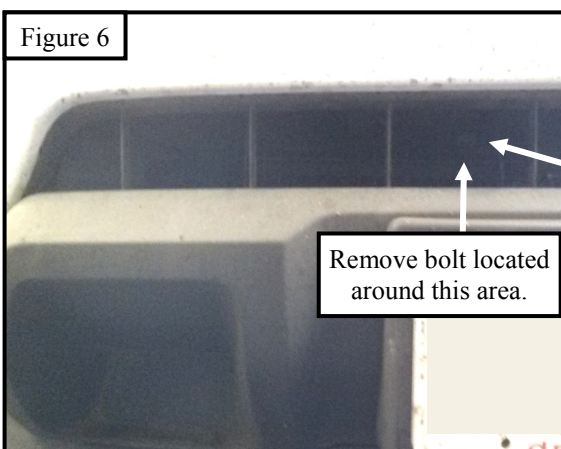
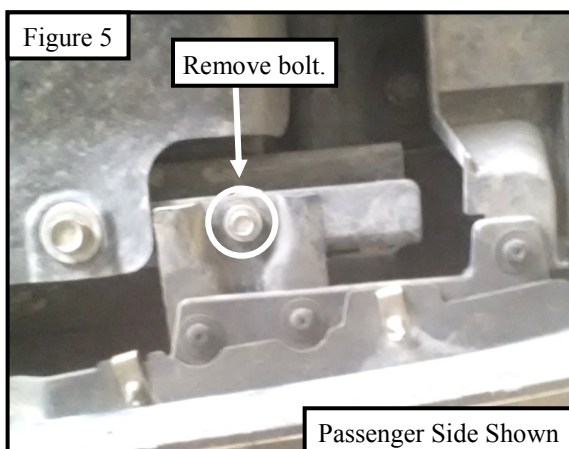
1. Remove contents from box, verify if all parts listed are present and free from damage.  
 Carefully read and understand all instructions before attempting installation.  
**Failure to identify damage before installation could lead to a rejection of any claim.**
2. Starting on either side, start by removing the wheel well bolts. See **Figure 1**.
3. Lift up the wheel well covers to expose (3) hex bolts. Reach up to remove the (3) hex bolts. See **Figures 2 - 4**.



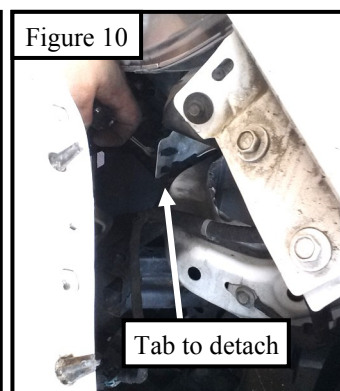
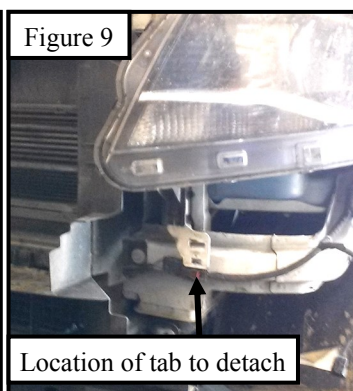
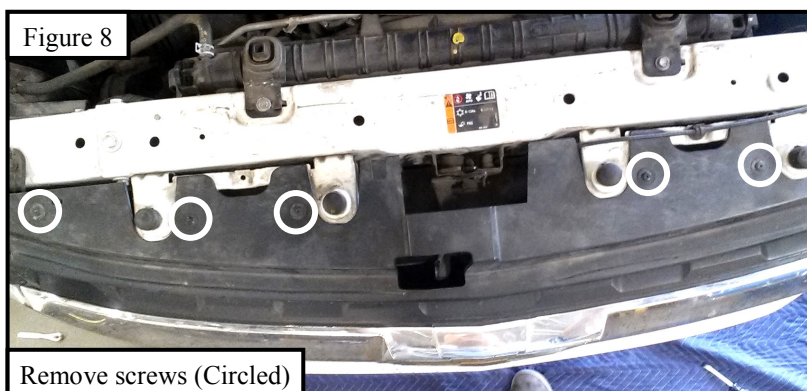
**WESTiN** Westin Automotive Products, Inc.  
 320 W. Covina Blvd  
 San Dimas, Ca. 91773

Thank you for choosing Westin products  
 for additional installation assistance please call  
 Customer Service (800) 793-7846

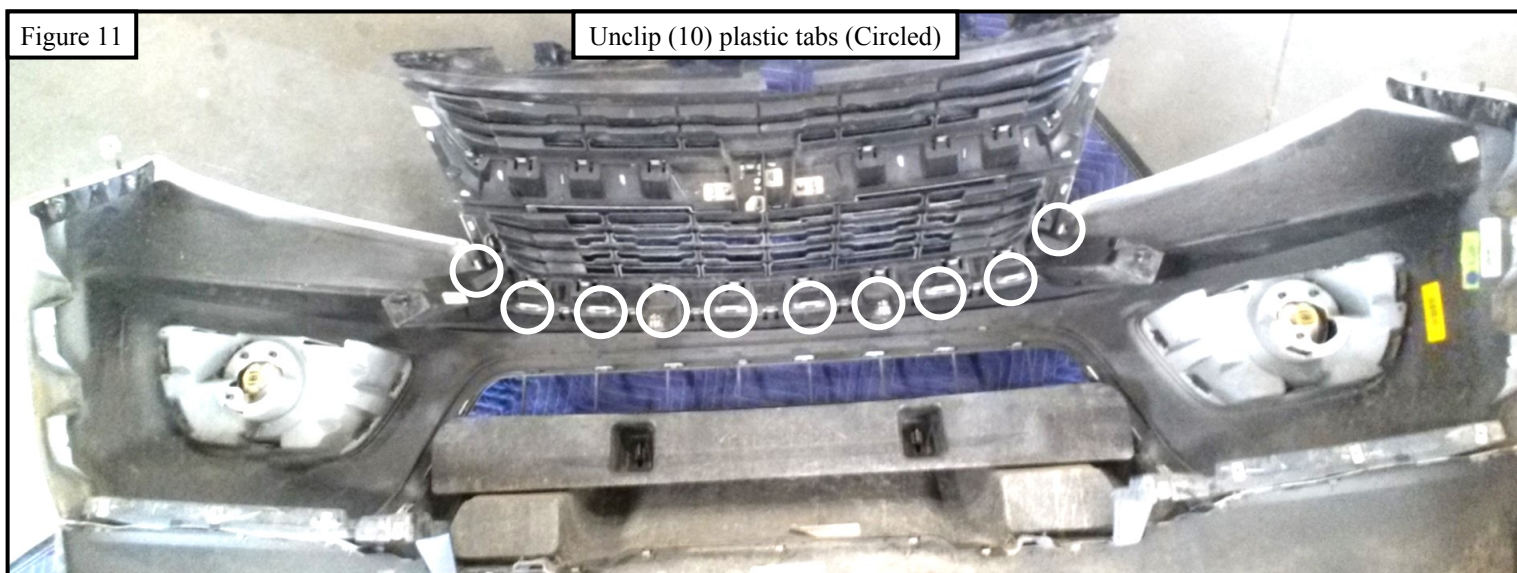
4. Locate and remove bolt on the bottom of the front bumper. See **Figure 5**. **Note:** One bolt per side.
5. Remove (2) bolts located in the lower bumper opening. Bolts are surrounded by a plastic shell. See **Figures 6 and 7**.



6. Under the hood, remove (6) screws that secure the upper grille. See **Figure 8**.
7. With assistance, remove the front grille and bumper assembly by pulling it off of the vehicle. Make sure to detach tabs located near the headlight and any electrical connections. See **Figure 9**.

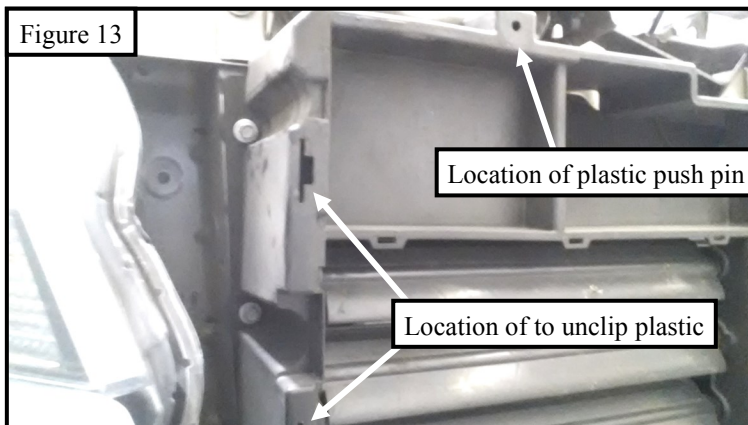
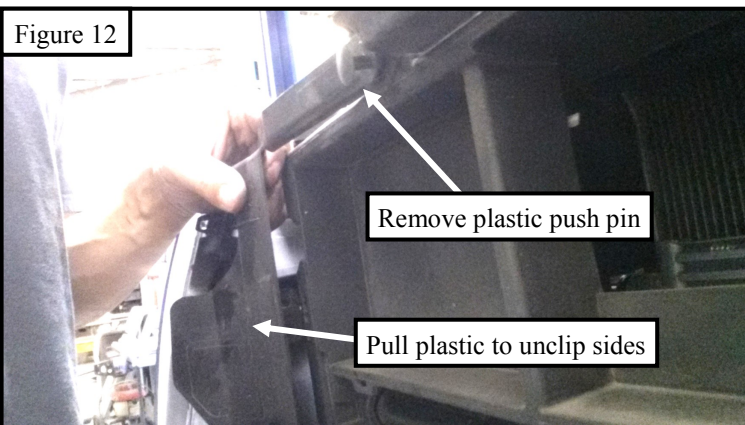


8. Lower the grille and front bumper assembly onto a flat cushioned surface and carefully unclip (10) plastic tabs that connect the grille with the front bumper. Remove the grille. See **Figure 11**.

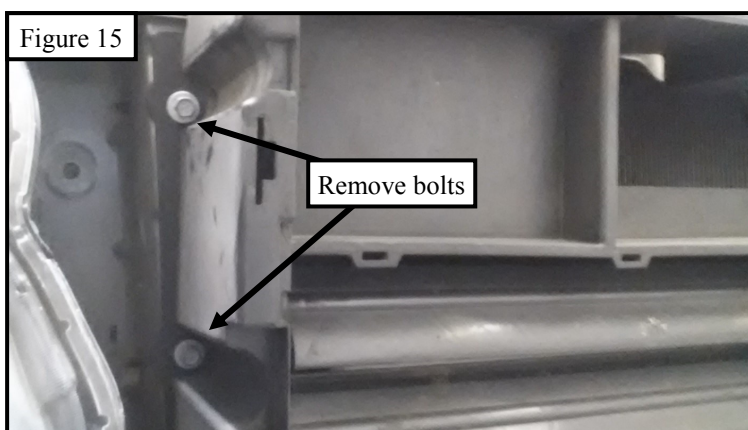
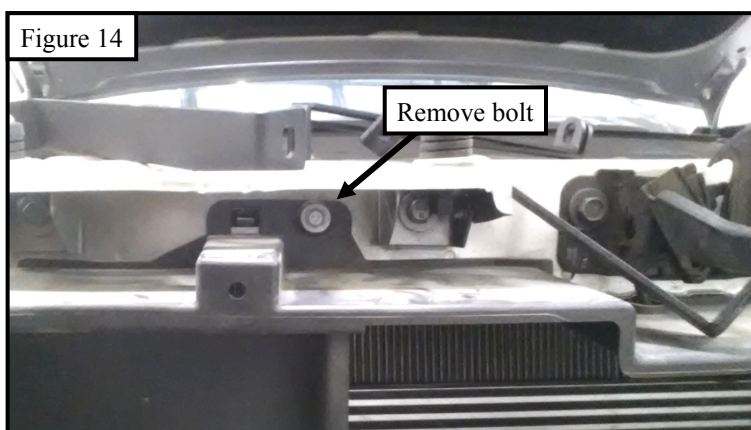




9. Re-attach the bumper to the vehicle the opposite way that it was removed.
10. Remove plastic around the grille shutter by removing plastic push pins at the top and un-clipping the sides. See **Figures 12-13**.



11. Locate (6) bolts, (3) on each side, along the grille shutters and remove them. See **Figures 14 and 15**.



12. Secure the mounting brackets (Items 2-7) using the provided M6 hardware (Items 8, 10, and 11) into the location of the previously removed factory bolts. See **Figure 16, 18, and 19**.
13. Loosely secure the HDX LED Grille (Item 1) onto the previously installed brackets using the provided M6 hardware (Items 8-11). **Note:** If needed zip ties may be used to keep bumper tight. See **Figure 17 and 19**.

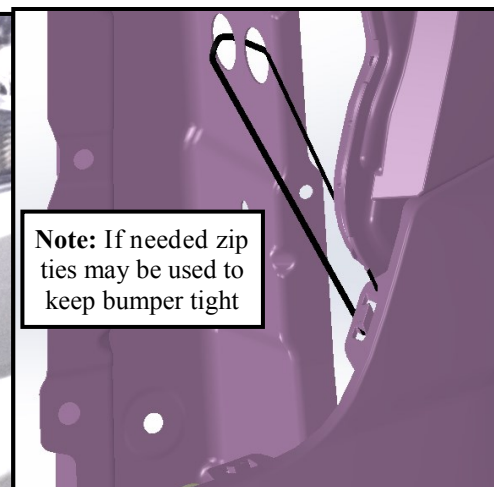
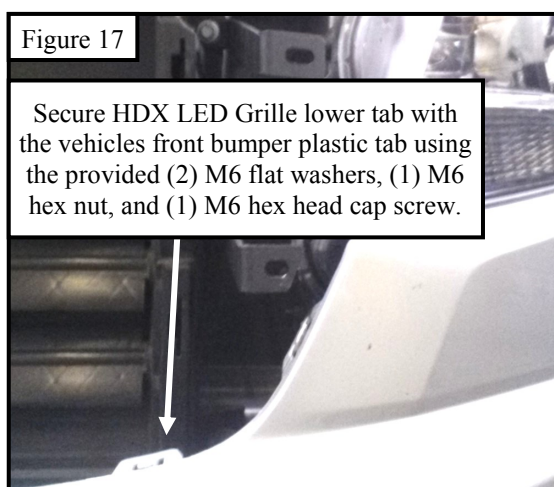
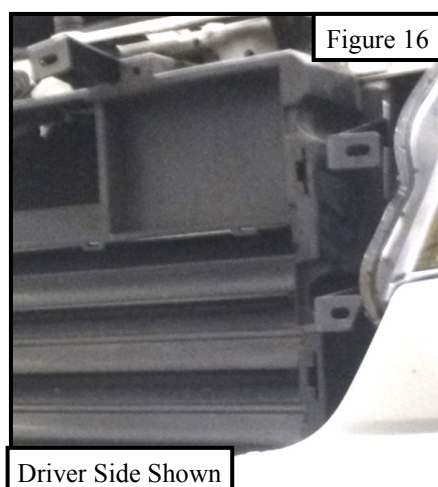
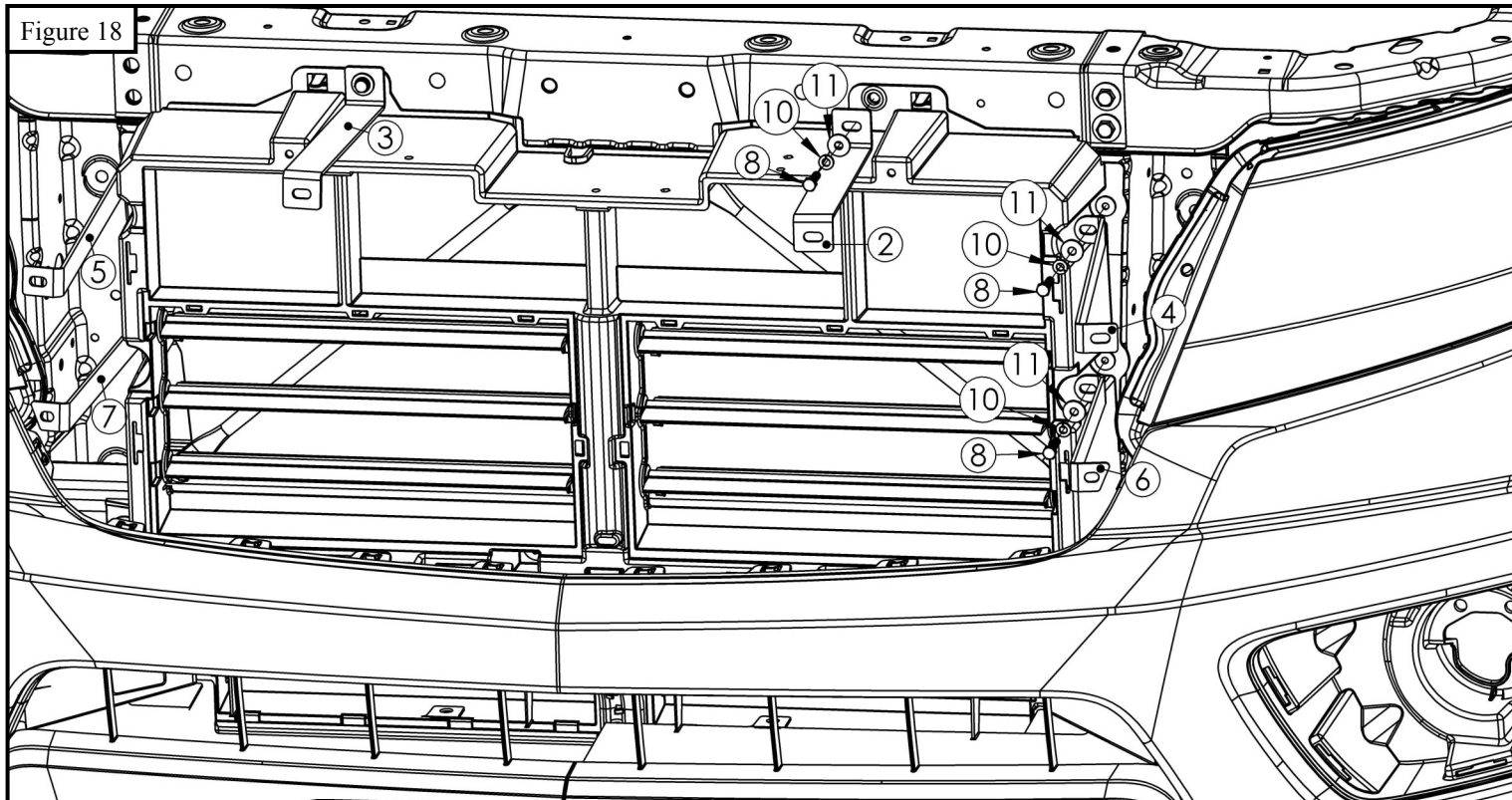


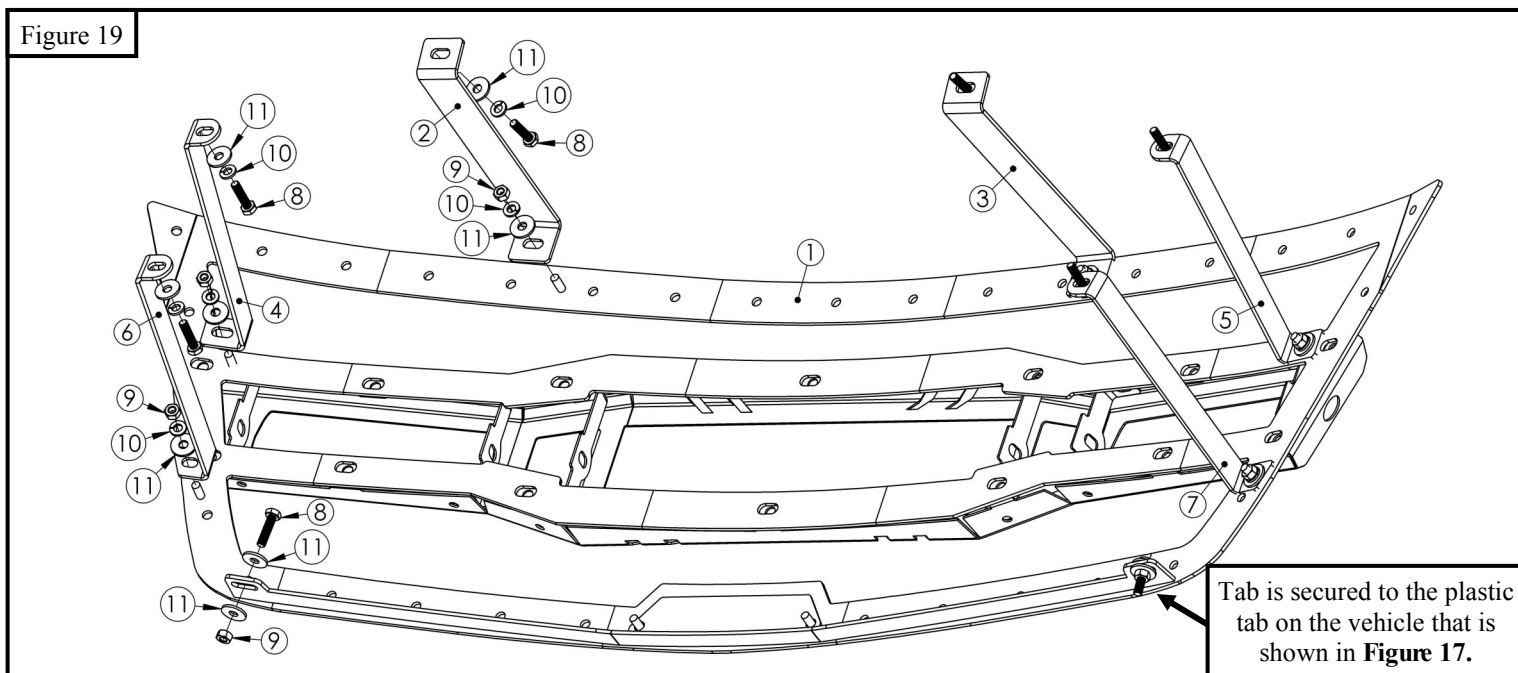
Figure 18



14. Align and adjust the HDX LED Grille and brackets as necessary then torque M6 hardware to 5-7 ft-lbs.

15. Refer to wiring instructions on **Page 6** in order to connect LED lights to vehicle.

Figure 19



**WESTIN**

Westin Automotive Products, Inc.  
320 W. Covina Blvd  
San Dimas, Ca. 91773



INSTALLATION COMPLETE



#### CARE INSTRUCTIONS

- REGULAR WAXING IS RECOMMENDED. DO NOT USE ANY TYPE OF POLISH OR WAX THAT MAY CONTAIN ABRASIVES.
- STAINLESS STEEL PRODUCTS CAN BE CLEANED WITH MILD SOAP AND WATER. STAINLESS STEEL POLISH SHOULD BE USED TO POLISH SMALL SCRATCHES.
- GLOSS BLACK FINISHES SHOULD BE CLEANED WITH MILD SOAP AND WATER.

**WESTIN** Westin Automotive Products, Inc.  
320 W. Covina Blvd  
San Dimas, Ca. 91773

Thank you for choosing Westin products  
for additional installation assistance please call  
Customer Service (800) 793-7846

[www.westinautomotive.com](http://www.westinautomotive.com)

1. Disconnect ground connection from battery (-) to avoid accidental short circuits before attempting to connect electrical wires.
2. When running wires, avoid areas of excessive heat, vibration, pinch or rotation when securing harness to vehicle.
3. Always use a fused (+) positive supply source.
4. This light becomes hot under continuous use. Do not remove or touch the casting for at least 30 minutes after the lamp has been turned off.

1. Locate the wiring harness and mount the switch in a convenient location where it is easily accessible from the drivers seat. **Note:** *The switch will need to be removed from the wiring harness so that the rest of the harness can be routed from the engine bay to the cabin.*
2. Route the wiring harness wire, specifically the fuse and relay, from the positive battery terminal along the firewalls existing wire routes. **Note:** *Tape as necessary to correct slack.*
3. Secure the relay by either drilling or using a pre-existing bolt along the chassis that is not connected to any other wire.
4. Run the switch harness through the firewall preferably through the pre-existing rubber plug that is used to run the OEM wiring harness from the engine bay to fuse box. **Note:** *Reconnect the switch to the wiring harness.*
5. Place the LED plug wire along the fender chassis where it will not get pinched and away from any moving parts (fan, pulleys etc.).
6. Run the attached wire from the LED Light Bar as previously mentioned away from any moving parts.
7. Connect both ends of wiring connectors from LED light bar and wiring harness.
8. Re-connect battery terminals, attach the red (+) wire to battery positive, and the black (-) wire to ground. **Note:** *Add dielectric grease (not supplied).*
9. Turn on the switch to make sure if the light works. If not, please check carefully if the wiring installation is correct.

The diagram illustrates a 12V electrical system. A battery is connected to a 20A fuse, which then leads to a relay labeled 'RELAY 12V'. The relay's output goes to a 5A mini fuse, which then splits to three LED lights. A buzzer is also connected to the system. Wire gauges are specified as 14ga for most wires and 20ga for the switch wire. Grounding points are indicated with 'Black(-)' labels. The battery and fuse are labeled 'Use 5/16" ring terminals'. The relay is labeled 'RELAY 12V'. The buzzer is labeled 'White(+) Blue(-)'. The LED lights are labeled 'LED Light'. The wire gauge specifications are: 'FOR ALL WIRE 14ga' and 'SWITCH WIRE 20ga -EXCEPT'.



## WARNING



Failure to follow these instructions could lead to death, personal injury, and / or property damage.

### FASTENERS:

All Westin supplied fasteners must be utilized and installed in accordance with the installation instructions and apply torque to the specifications as defined. **DOUBLE CHECK ALL FASTENERS BEFORE INITIAL USE, AND PERIODICALLY IN THE FUTURE TO ENSURE PROPER FUNCTION AND SAFETY.**

### DRILLING:

Most Westin products do not require drilling for installation. If drilling is defined as required, use caution when drilling a vehicle. **FAILURE TO REVIEW AN AREA TO BE DRILLED MAY RESULT IN PERSONAL INJURY AND/OR INJURY TO OTHERS AS WELL AS VEHICLE DAMAGE.**

### EYE PROTECTION:

**ALWAYS WEAR SAFETY GLASSES OR GOGGLES DURING THE INSTALLATION PROCESS TO AVOID PERSONAL INJURY.**

### MAXIMUM TOWING/CARRYING CAPACITY:

The Westin Receiver Hitches will have a visible tow rating label affixed directly on the product. User should never exceed the vehicle manufacturers maximum tow and weight rating regardless of the capacity of the hitch. **FAILURE TO FOLLOW THESE GUIDELINES WILL VOID THE WESTIN WARRANTY AND MAY RESULT IN PERSONAL INJURY AND/OR INJURY TO OTHERS AS WELL AS VEHICLE DAMAGE.**



Westin Automotive Products, Inc.  
320 W. Covina Blvd  
San Dimas, Ca. 91773